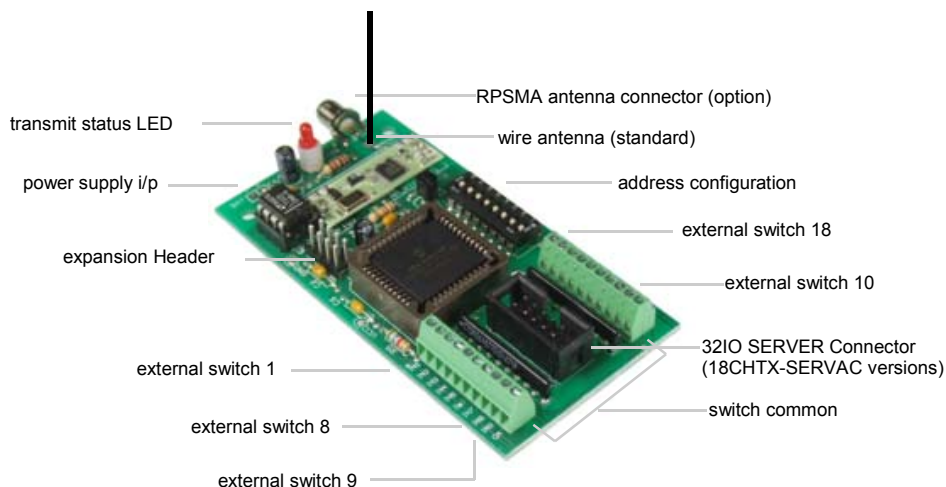




18CHTX 18 Channel Wireless RF Transmitter



Description

The 18CHTX wireless (AM or FM) RF remote control transmitter features eighteen screw terminal inputs for connection to external switches. Up to 256 unique DIP switch configurable address settings allow for multiple units to operate within the same environment. All the necessary data encoding required for reliable operation with the companion RF remote control receivers is performed by the on-board microcontroller. The 18CHTX is companion to the 10R8D ten relay and eight digital outputs receiver. It is also compatible with our 16CHRX receiver, the 18CHRX receiver and the SRX series 1,2,3 and 4 channel remote control receivers. When used together with the compatible receiver boards, up to eighteen independent wireless remote control operations may be performed.

A special version of the 18CHTX, namely the 18CHTX-SERVAC, is available as a compatible plug-in peripheral for the 32IO SERVER, internet remote monitoring and control server, to provide a wireless extension of the 32IO SERVER's output port. (visit our website for further details on the 18CHTX-SERVAC, 32IO SERVER and other compatible modules)

Features:

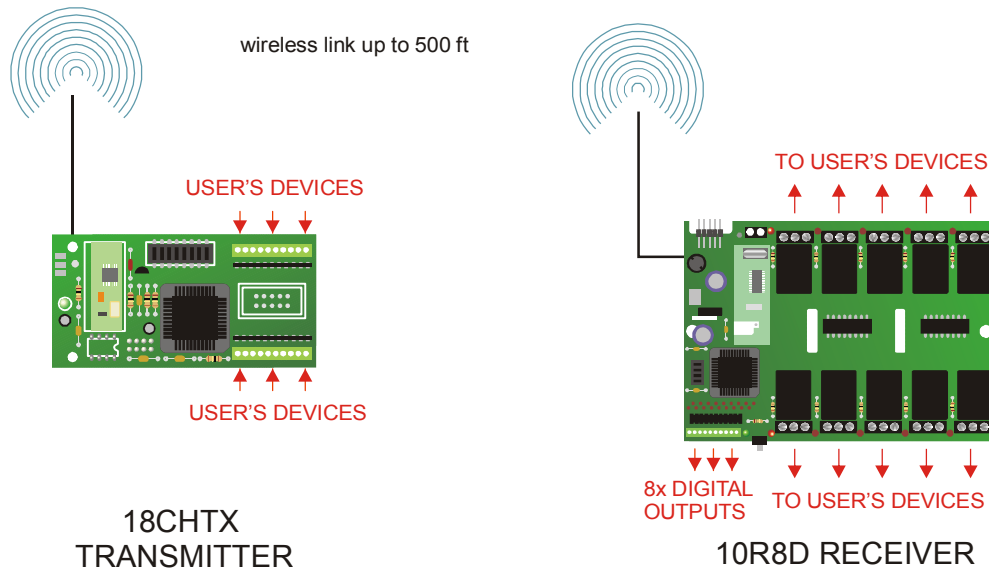
- 6-12 Vdc operation,
- Ultra low standby current (14 uA)
- 18 switch (dry contact) inputs
- 256 unique address combinations
- 433.92 MHz AM or FM versions
- 868MHz FM versions
- Crystal controlled frequency stability (FM versions)
- SAW controlled stability (AM version)
- 2X 10 screw terminal inputs for external switch connection
- Compatible with 10R8D, 16CHRX and 1,2,3,4CH-SRX receivers
- Compatible with 32IO SERVER to control/monitor up to 8 devices wirelessly over the internet
- Typical range up to 700ft (FM versions): 300ft (AM versions)
- RPSMA antenna connector
- PCB size: 45.78mm(1.8in.) x 88.9mm (3.5in.)

Operation of the 18CHTX transmitter with the 10R8D receiver

The 18CHTX is compatible with the 10R8D receiver to provide a remote control link with 10 relay outputs and 8 digital outputs. The 18CHTX will be activated upon connecting an external dry contacts such as switches between a COMMON input screw terminal (10 or 20) and screw terminal inputs 1- 9 and screw terminal inputs 11-19 via. Inputs 1 to 9 on the transmitter map wirelessly to 8 digital outputs on the 10R8D receiver and inputs 9 to 18 are mapped to the 10 relay outputs on 10R8D receiver. In addition, a combination of any 2 or more outputs (digital or relay) on 10R8D can be activated by simultaneously connecting 2 or more inputs on the 18CHTX .

In standby, the 18CHTX transitions to power saving mode, which provides over 4 years of standby life from a standard 9V alkaline battery.

Refer to the 10R8D receiver manual for details on all the operational features and functions, including latched or pulsed outputs, automatic transmitter receiver pairing, user configurable “transmitter switch to receiver output” map-



Operation of the 18CHTX transmitter with the 1,2,3 or 4CH-SRX receivers

The 18CHTX wirelessly controls the relay outputs of the SRX series receivers. This combination provides the ability to individually control multiple remote SRX receivers. An application may comprise of a single 18CHTX transmitter controlling up to 18 individual 1CH-SRX receivers located at 18 different remote points within a radius of up to 700ft open field, or a single 18CHTX may control up to 8 individual 2CH-SRX receivers plus 2 1CH-SRX receivers. The same principle applies to the ability of the 18CHTX controlling a mix of 1, 2,3 and 4CH-SRX receiver modules.

The 18CHTX inputs 17 and 18 require special attention when used with the 1CH-SRX series receivers. The SRX receiver's 4 position DIP switch settings allow for the mapping of its relay output (outputs) to the corresponding 18CHTX inputs 1-16. However, to map the 18CHTX inputs 17 and 18 to the SRX receiver's relay output, DIP switch 7 and 8 of the 8 position DIP switch and the 4 position DIP switch of the SRX receiver are to be configured as follows:

SRX Receiver's 8 Position DIP Switch 7	SRX Receiver's 8 Position DIP Switch 8	SRX Receiver's 4 Position DIP Switch	SRX relay is mapped to 18CHTX input #
ON	OFF	ALL OFF	17
OFF	ON	ALL OFF	18

From the above table it is evident that inputs 17 and 18 of the 18CHTX will control two **1CH-SRX** receivers where one receiver is controlled by input 17 and the second receiver is controlled by input 18.

To summarize, the 18CHTX inputs 1-16 will control any combination of 1,2,3 and 4 CH-SRX receivers whereas inputs 17 and 18 can only control the 1CH-SRX receivers.

Refer to the SRX series receiver manual for details on configuring the address and channel DIP switches and additional features and functions of the SRX series receivers. The graphic on the following page shows the 18CHTX communicating with four 4CH-SRX receivers.

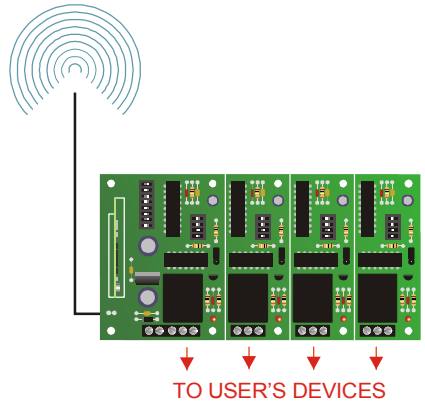
Typical Configurations for a single system address: *(capacity may comprise of up to 255 systems)*

18CHTX with 18 external switch inputs controls **eighteen** separate remote 1CH-SRX receivers

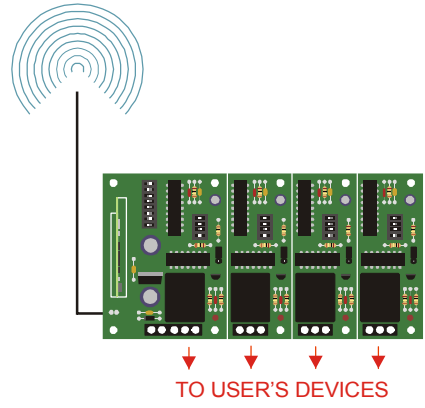
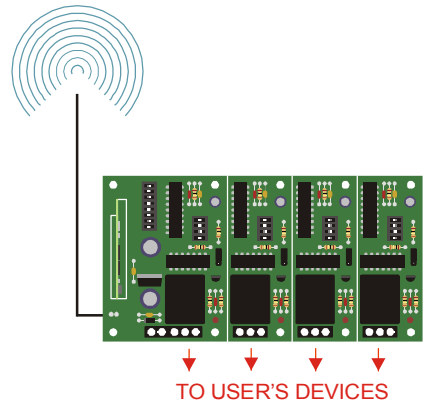
18CHTX with 18 external switch inputs controls **eight** separate remote 2CH-SRX and **two** 1CH-SRX receivers

18CHTX with 18 external switch inputs controls **four** separate remote 4CH-SRX and **two** 1CH-SRX receivers

18CHTX with 18 external switch inputs controls **a combination** of separate remote 1, 2, 3 and 4CH-SRX receivers



18CHTX
TRANSMITTER

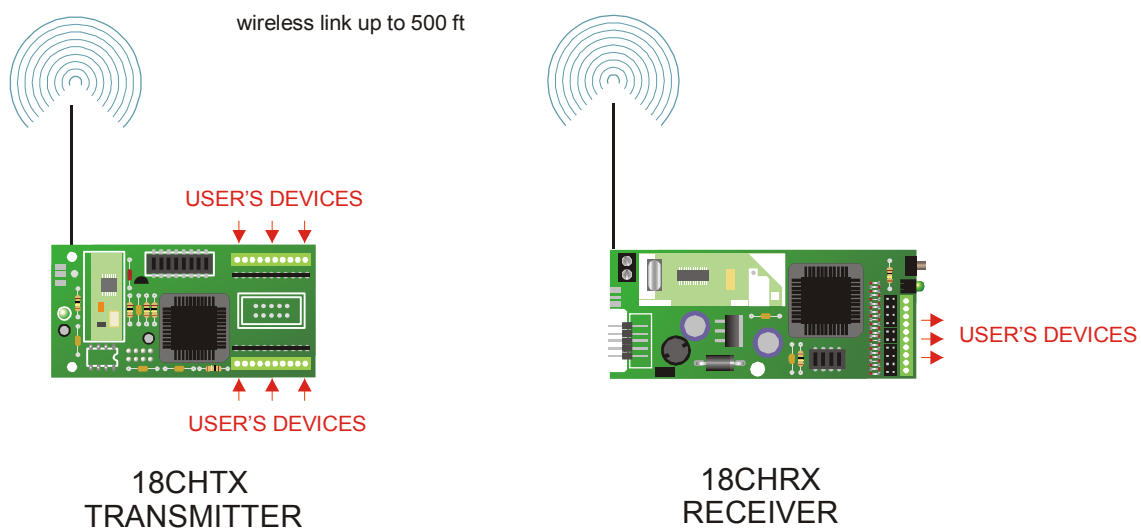


4CH-SRX RECEIVERS

Operation of the 18CHTX transmitter with the 18CHRX receiver

The 18CHTX is compatible with the 18CHRX receiver to provide a remote control link with 18 digital outputs. The 18CHTX will be activated upon connecting external contacts such as a switches to COMMON screw terminal (terminals 10 or 20) and screw terminals 1-9 and between COMMON screw terminals (9 or 18) and screw terminals 10-17. Each of the 18 screw terminal inputs will map to the digital outputs pin header and screw terminals of the 18CHRX. input on the sw. In addition, a combination of any 2 outputs (digital or relay) on 10R8D can be activated by simultaneously connecting 2 inputs on the 18CHTX to a common input. In standby, the 18CHTX transitions to power saving mode, which provides over 4 years of standby life from a standard 9V alkaline battery.

Refer to the 18CHRX product brief and documentation on our website for further details on the 18CHRX receiver.



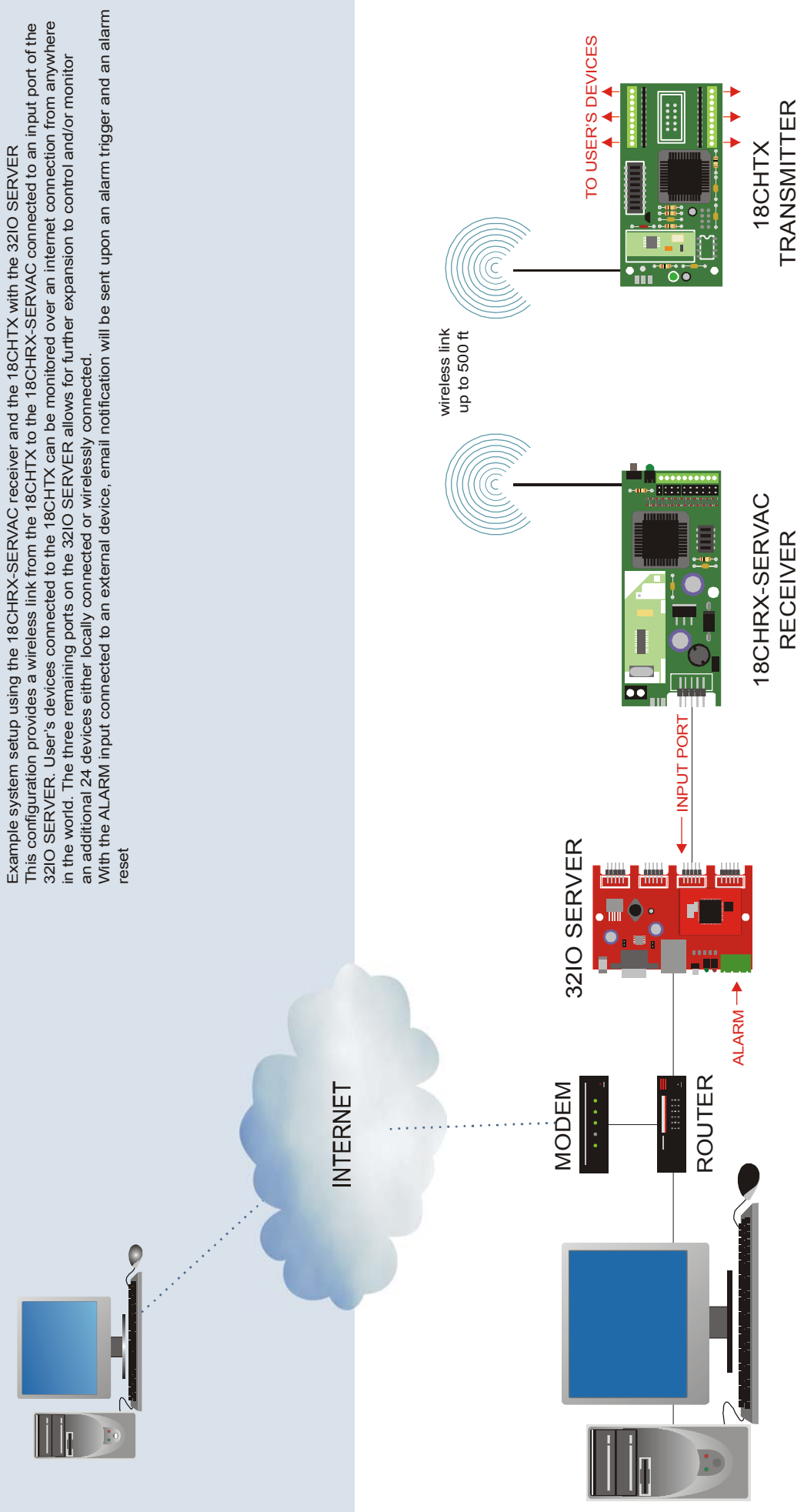
Operation of the 18CHTX with the 32IO SERVER (and the 18CHTX-SERVAC version)

The 18CHTX may be used as a remote transmitter connected to user devices to communicate the user device states to the 18CHRX-SERVAC receiver connected to an input port of the 32IO SERVER. This will enable wireless monitoring of up to 8 remote user devices from any computer over the internet (WAN) or intranet (LAN).

Conversely, the special version, 18CHTX-SERVAC, connects to an output port of the 32IO SERVER to provide a wireless extension of the 32IO SERVER output port. This will enable users to control up to 8 user devices wirelessly over the internet (WAN) or the intranet (LAN). (Please see the 32IO SERVER product and documentation on our website for further details)

The following two pages show graphic layouts of the 18CHTX and the 18CHTX-SERVAC deployed for applications using the 32IO SERVER.

32IO SERVER Configuration

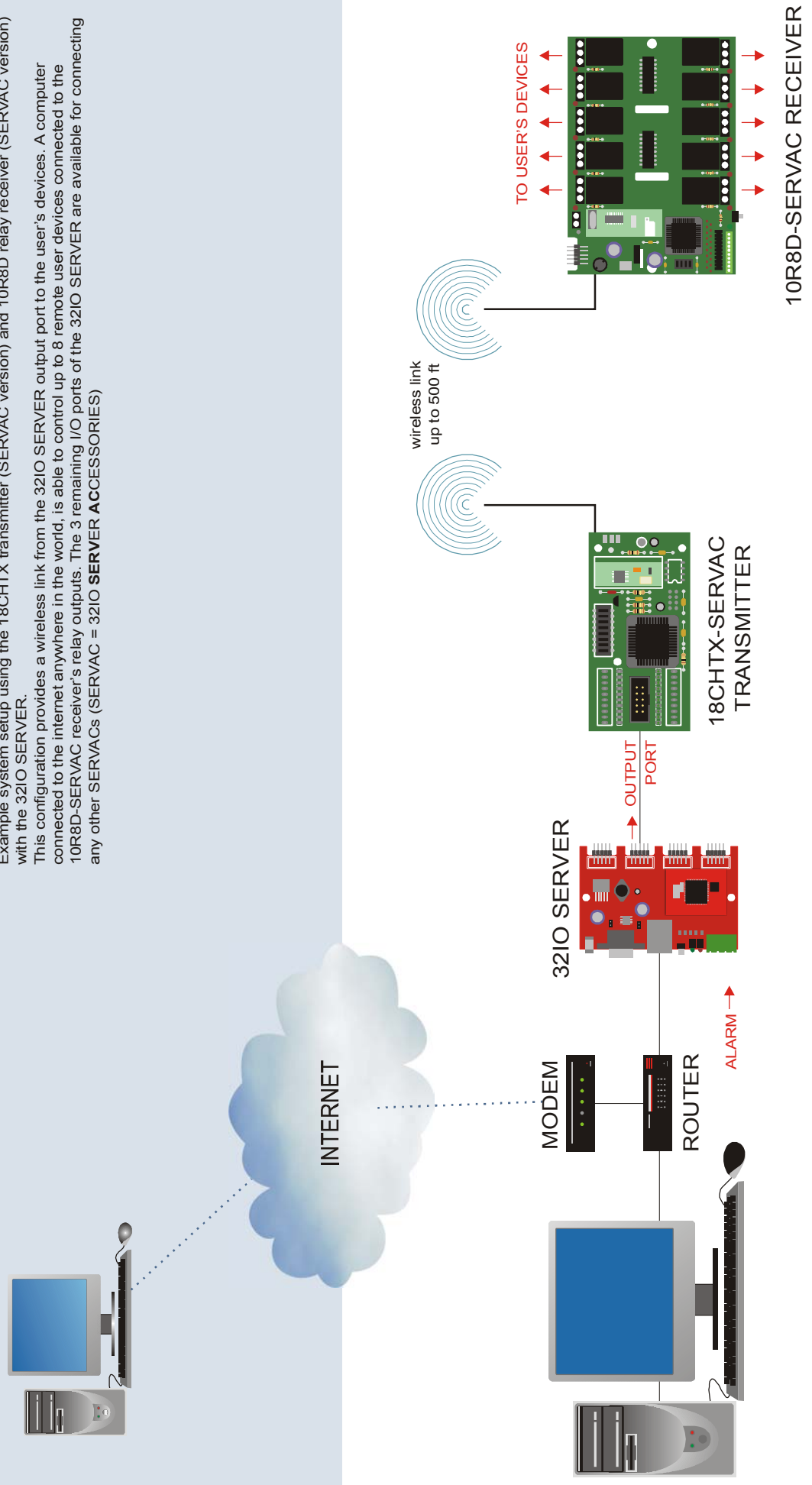


Example system setup using the 18CHRX-SERVAC receiver and the 18CHTX with the 32IO SERVER
This configuration provides a wireless link from the 18CHTX to the 18CHRX-SERVAC connected to an input port of the 32IO SERVER. User's devices connected to the 18CHTX can be monitored over an internet connection from anywhere in the world. The three remaining ports on the 32IO SERVER allows for further expansion to control and/or monitor an additional 24 devices either locally connected or wirelessly connected.
With the ALARM input connected to an external device, email notification will be sent upon an alarm trigger and an alarm reset

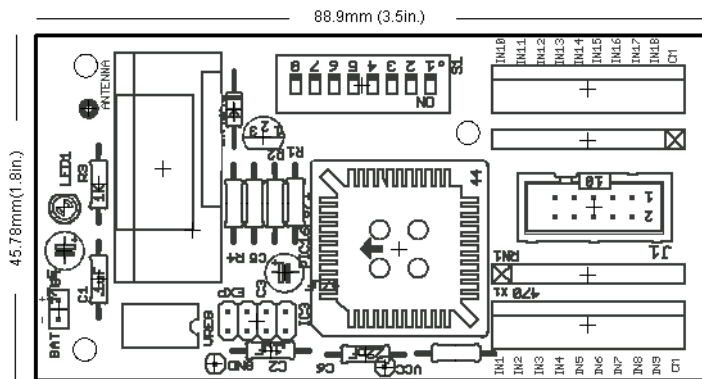
32IO SERVER Configuration

Example system setup using the 18CHTX transmitter (SERVAC version) and 10R8D relay receiver (SERVAC version) with the 32IO SERVER.

This configuration provides a wireless link from the 32IO SERVER output port to the user's devices. A computer connected to the internet anywhere in the world, is able to control up to 8 remote user devices connected to the 10R8D-SERVAC receiver's relay outputs. The 3 remaining I/O ports of the 32IO SERVER are available for connecting any other SERVACs (SERVAC = 32IO SERVER ACCESSORIES)



18CHTX Mechanical Dimensions



Antenna

The 18CHTX is supplied with a 1/4 wave wire whip antenna and also includes a RPSMA connector for attachment of one of our compatible molded RPSMA antenna such as the 1/4-RPSMA and the 1/4RA-RPSMA. The connector also accepts our RPSMA antenna extension cables, RPSMA-XMF, for applications that require off board, panel mounting or remote antenna mounting.

For maximum range, the antenna should be vertically oriented and have as much free space around it as possible. It should be kept well clear of surrounding objects, particularly large metal surface areas. Elevation above ground should also be considered; the further away the antenna is from the ground, the better is the signal radiation.

Power Supply

The 18CHTX requires a DC power supply of minimum 6Vdc and a maximum of 16Vdc. The 18CHTX is designed as a low power device, drawing only 14uA in standby, and typically 12mA when transmitting. The low current consumption makes the 18CHTX transmitter module ideal for low power battery operated applications.

The module is supplied with a 9V battery snap connector.

Disclaimer:

Technical specifications are subject to change without notice. Whilst every effort has been made to ensure the accuracy of the information contained in this document, ABACOM Technologies Inc. does not assume responsibility for any errors or omissions that may exist. ABACOM Technologies Inc. does not assume responsibility for any damage caused through use or misuse of their products and the onus lies entirely with the end user in determining the suitability of and use of the product for any particular application. ABACOM Technologies Inc. products are not recommended for applications where human life may be at risk.